

Highest Ranked Industries

Top 10 Industries (6-Digit) in 3 Massachusetts Counties

Emsi Q3 2017 Data Set

September 2017

Cape and Islands Workforce Development Board



426 North St. Ste. 9
Hyannis, Massachusetts 2601
508.775.5900

Parameters

Regions

Code	Description
25001	Barnstable County, MA
25007	Dukes County, MA
25019	Nantucket County, MA

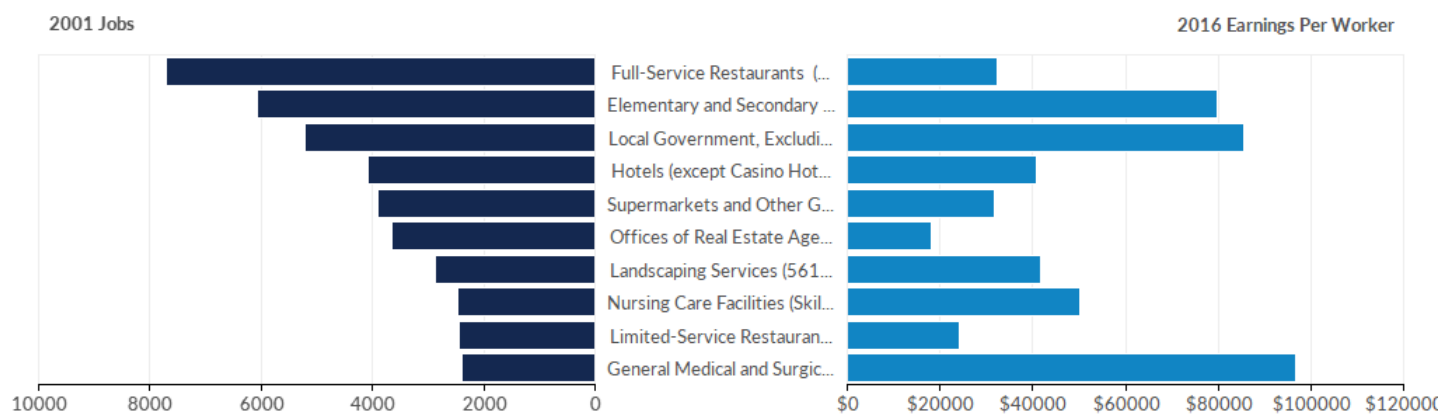
Timeframe

2001 - 2016

Datarun

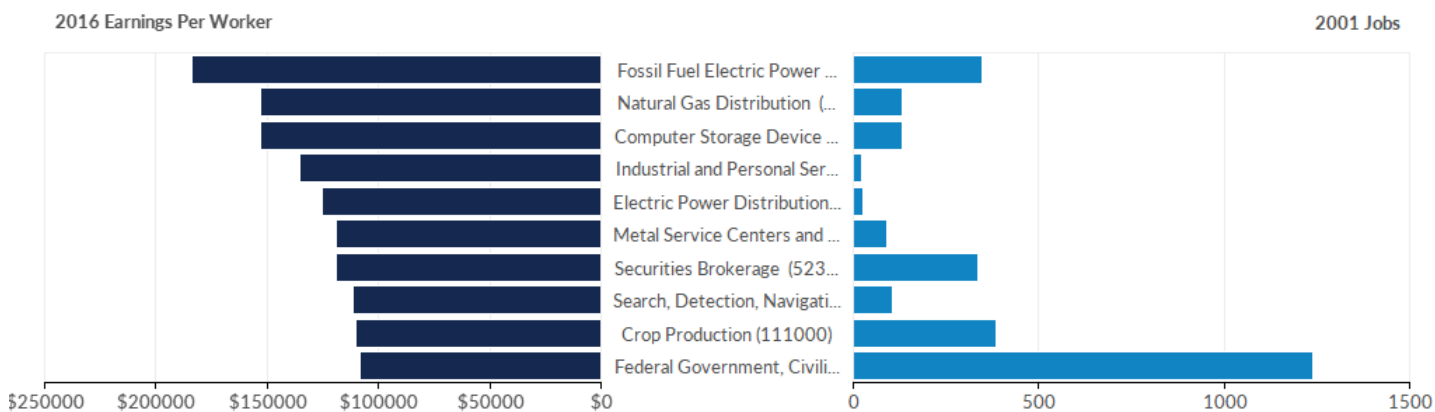
2017.3 – QCEW Employees, Self-Employed, and Extended Proprietors

Largest Industries



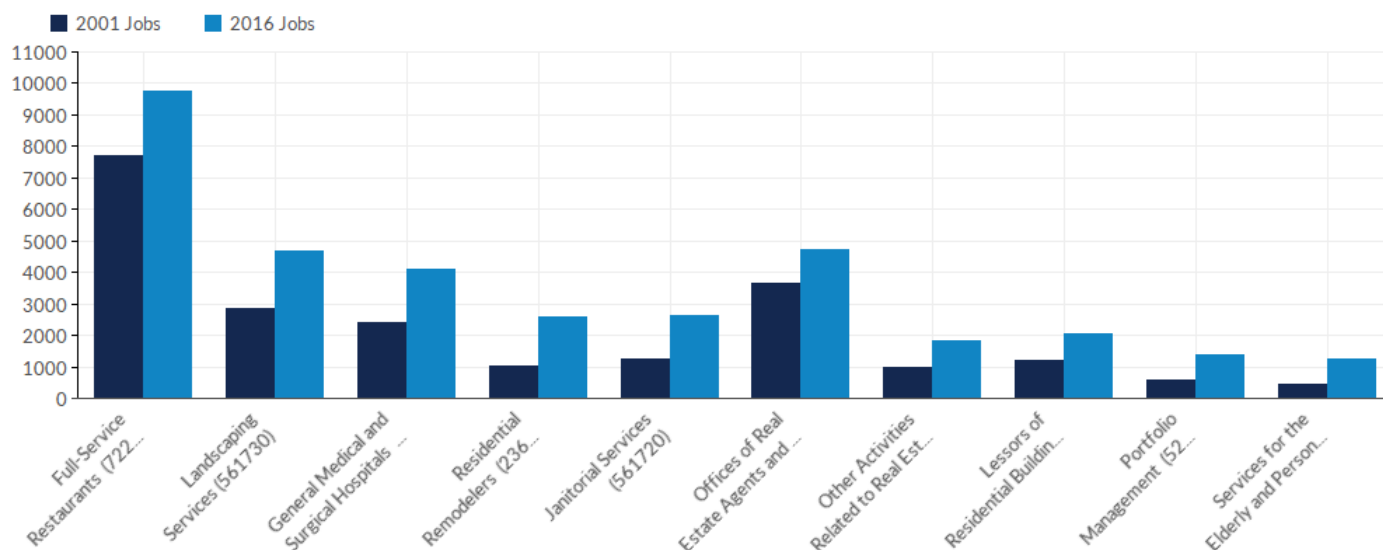
Industry	2001 Jobs	2016 Jobs	Change in Jobs (2001-2016)	% Change	2016 Earnings Per Worker
Full-Service Restaurants	7,711	9,774	2,063	27%	\$32,442
Elementary and Secondary Schools (Local Government)	6,075	6,465	390	6%	\$79,926
Local Government, Excluding Education and Hospitals	5,226	5,872	645	12%	\$85,493
Hotels (except Casino Hotels) and Motels	4,071	3,887	-184	-5%	\$40,662
Supermarkets and Other Grocery (except Convenience) Stores	3,907	4,396	489	13%	\$31,883
Offices of Real Estate Agents and Brokers	3,662	4,703	1,041	28%	\$18,145
Landscaping Services	2,860	4,672	1,812	63%	\$41,642
Nursing Care Facilities (Skilled Nursing Facilities)	2,471	2,247	-224	-9%	\$50,205
Limited-Service Restaurants	2,435	2,893	458	19%	\$24,135
General Medical and Surgical Hospitals	2,395	4,092	1,697	71%	\$96,827

Highest Paying Industries



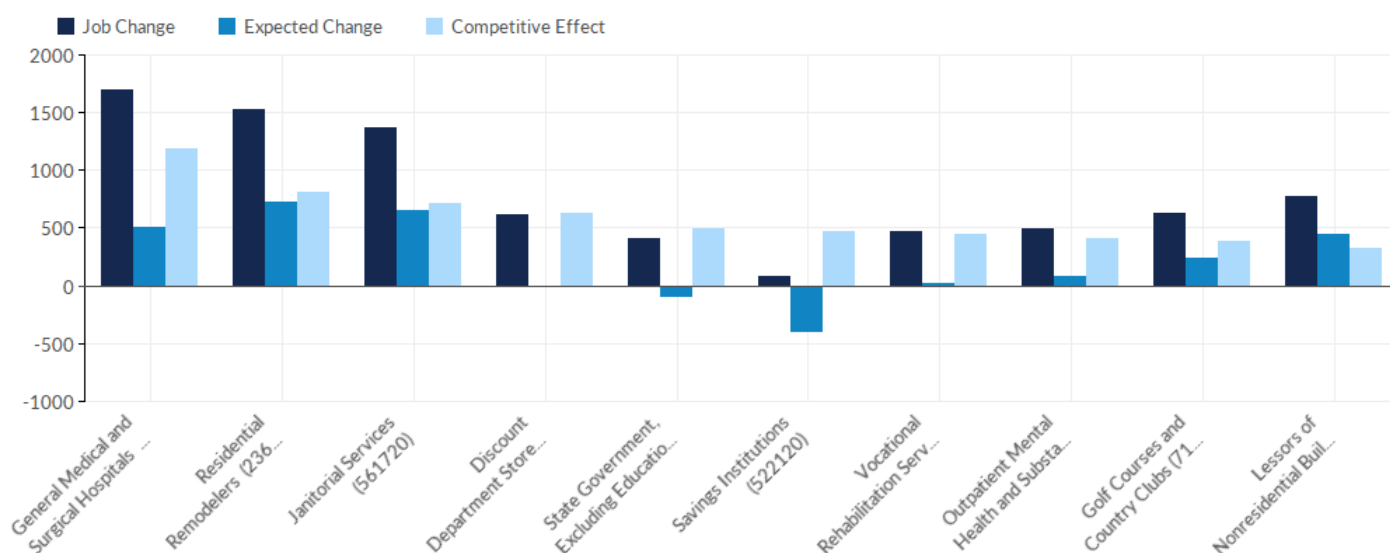
Industry	2001 Jobs	2016 Jobs	Change in Jobs (2001-2016)	% Change	2016 Earnings Per Worker
Fossil Fuel Electric Power Generation	348	36	-312	-90%	\$184,015
Natural Gas Distribution	132	62	-70	-53%	\$153,045
Computer Storage Device Manufacturing	133	176	43	32%	\$152,729
Industrial and Personal Service Paper Merchant Wholesalers	22	20	-2	-9%	\$135,209
Electric Power Distribution	28	180	152	543%	\$125,341
Metal Service Centers and Other Metal Merchant Wholesalers	91	28	-63	-69%	\$119,257
Securities Brokerage	335	378	43	13%	\$118,999
Search, Detection, Navigation, Guidance, Aeronautical, and Nautical System and Instrument Manufacturing	107	367	260	243%	\$111,694
Crop Production	386	264	-122	-32%	\$110,373
Federal Government, Civilian, Excluding Postal Service	1,238	1,199	-39	-3%	\$108,399

Fastest Growing Industries



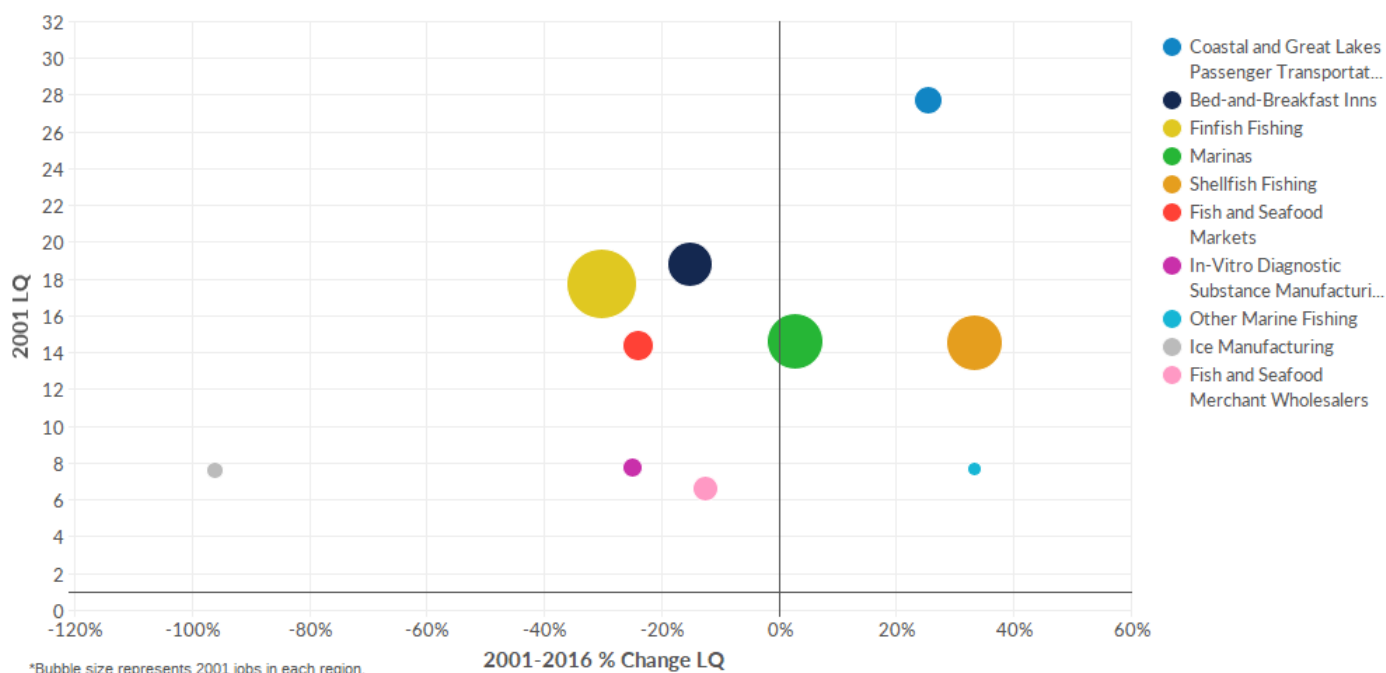
Industry	2001 Jobs	2016 Jobs	Change in Jobs (2001-2016)	% Change	2016 Earnings Per Worker
Full-Service Restaurants	7,711	9,774	2,063	27%	\$32,442
Landscaping Services	2,860	4,672	1,812	63%	\$41,642
General Medical and Surgical Hospitals	2,395	4,092	1,697	71%	\$96,827
Residential Remodelers	1,033	2,563	1,529	148%	\$42,328
Janitorial Services	1,266	2,636	1,370	108%	\$23,370
Offices of Real Estate Agents and Brokers	3,662	4,703	1,041	28%	\$18,145
Other Activities Related to Real Estate	982	1,828	846	86%	\$14,863
Lessors of Residential Buildings and Dwellings	1,203	2,042	839	70%	\$24,630
Portfolio Management	573	1,401	828	144%	\$30,986
Services for the Elderly and Persons with Disabilities	451	1,232	781	173%	\$27,559

Most Competitive Industries



Industry	Job Change	Ind Mix Effect	Nat Growth Effect	Expected Change	Competitive Effect	2016 Earnings Per Worker
General Medical and Surgical Hospitals	1,697	93	417	510	1,187	\$96,827
Residential Remodelers	1,529	543	180	723	806	\$42,328
Janitorial Services	1,370	435	220	655	715	\$23,370
Discount Department Stores	621	-23	16	-7	628	\$23,041
State Government, Excluding Education and Hospitals	405	-340	249	-91	496	\$98,104
Savings Institutions	77	-540	145	-395	472	\$88,313
Vocational Rehabilitation Services	464	-13	31	18	446	\$41,167
Outpatient Mental Health and Substance Abuse Centers	494	60	20	80	414	\$46,157
Golf Courses and Country Clubs	624	105	134	239	385	\$43,200
Lessors of Nonresidential Buildings (except Miniwarehouses)	768	351	93	444	324	\$29,187

Highest Industry Location Quotient



Industry	2001 Jobs	2016 Jobs	% Change	2001 LQ	2016 LQ	% Change LQ	2016 Earnings Per Worker
Coastal and Great Lakes Passenger Transportation	221	263	19%	27.77	34.80	25%	\$47,409
Bed-and-Breakfast Inns	449	458	2%	18.81	15.93	-15%	\$43,879
Finfish Fishing	766	507	-34%	17.72	12.37	-30%	\$40,469
Marinas	590	830	41%	14.60	15.00	3%	\$52,488
Shellfish Fishing	573	751	31%	14.59	19.44	33%	\$39,867
Fish and Seafood Markets	248	192	-22%	14.37	10.91	-24%	\$43,556
In-Vitro Diagnostic Substance Manufacturing	97	138	43%	7.76	5.81	-25%	\$75,490
Other Marine Fishing	3	44	1,334%	7.67	10.22	33%	\$32,570
Ice Manufacturing	61	2	-96%	7.64	0.30	-96%	\$32,135
Fish and Seafood Merchant Wholesalers	153	164	7%	6.63	5.79	-13%	\$48,144

Appendix A - Data Sources and Calculations

Industry Data

Emsi industry data have various sources depending on the class of worker. (1) For QCEW Employees, Emsi primarily uses the QCEW (Quarterly Census of Employment and Wages), with supplemental estimates from County Business Patterns. (2) Non-QCEW employees data are based on a number of sources including QCEW, Current Employment Statistics, County Business Patterns, BEA State and Local Personal Income reports, the National Industry-Occupation Employment Matrix (NIOEM), the American Community Survey, and Railroad Retirement Board statistics. (3) Self-Employed and Extended Proprietor classes of worker data are primarily based on the American Community Survey, Nonemployer Statistics, and BEA State and Local Personal Income Reports. Projections for QCEW and Non-QCEW Employees are informed by NIOEM and long-term industry projections published by individual states.

State Data Sources

This report uses state data from the following agencies: Massachusetts Executive Office of Labor and Workforce Development